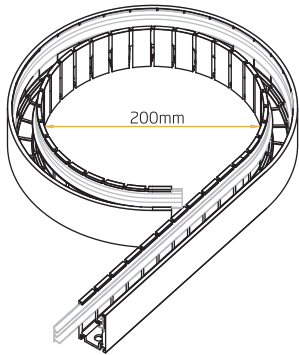
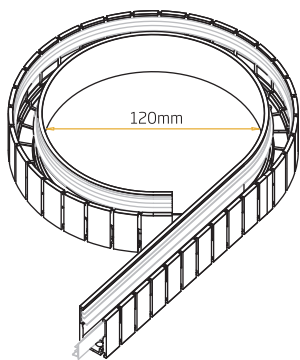


FXN 1129 | FLEXIBLE NEON
BENDABLE SERRATED ALUMINIUM PROFILE

Min. Bending Diameter (Toothed Side inwards)

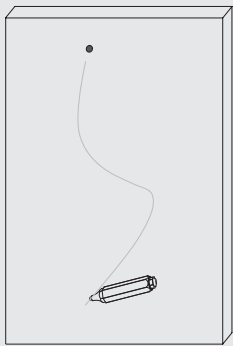


Min. Bending Diameter (Toothed Side outwards)



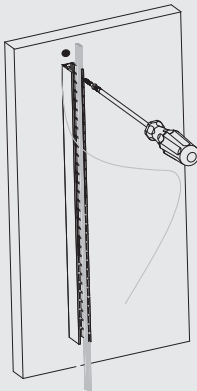
Friendly Reminder – Please read instructions carefully before operation

Step 1



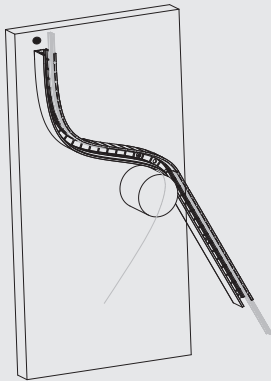
Mark the required shape on the mounting surface or print the sketch in the scale of 1:1 if complicated.

Step 2



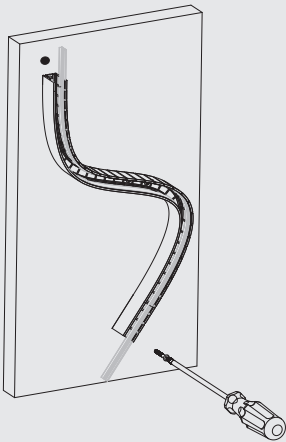
Get the front connector outside of profile and keep at least 10mm more apart. Fix the screw starting from the power input end.

Step 3



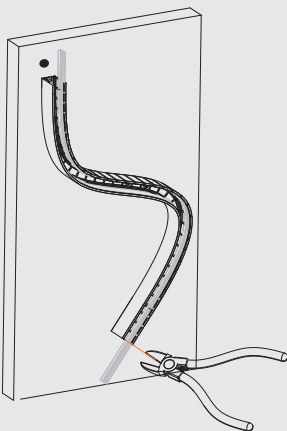
Use cylinder or disc-like object you have to assist with shaping.

Step 4



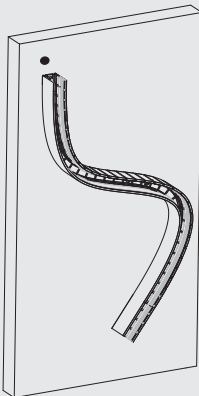
Fix the rest in sequence along with the marks.

Step 5



Adjust the serrate silicone tape and remove the redundant lengths at both ends.

Step 6



Finish and fix the light in.